

Design Features

- Unique expanding rubber and fixing of spring which also provides high frequency attenuation.
- Nominal 25 & 50 mm deflection colour coded springs with 50% overload capacity.
- Can be bolted to supporting structure or free standing on 6mm thick ribbed rubber pad.
- Fully height adjustable.
- Zinc plated metals.
- No snubbing gives maximum efficiency.



This unique range of open spring mounting uses an integral rubber end fixing of the spring which sets them apart from all other designs. Loose springs and plates are now history and high frequency and noise attenuation is provided regardless of whether rubber seating pad is used or not.

Originally designed for use with type IPF Inertia Pouring Frames, the EFOS Mountings are now widely used to isolate vibration from every conceivable type of rotating and reciprocating machine. Some examples being air handling units, axial and centrifugal fans, low level pipe work, ductwork, condensing units, pumps, generating sets, chillers, etc. Where control of transient motion is required open spring mountings can be used in conjunction with our Viscous Dampers Type EFVD.

Isolation Efficiency at Typical Machine Speeds

M/C Speed (rpm)	EFFICIENCY %		
	15mm DEFL	25mm DEFL	50mm DEFL
300	do not use	34.0	75.2
500	68.7	83.3	92.3
750	88.1	93.2	96.7
1000	93.7	96.3	98.2
1200	95.5	97.4	98.7
1500	97.3	98.4	99.2
1750	98.0	99.8	99.4
2000	98.5	99.1	99.5

Size	Load Range (kg)	Nominal Deflection (mm)
EFOS25	30-2300	25
EFOS50	100-1300	50

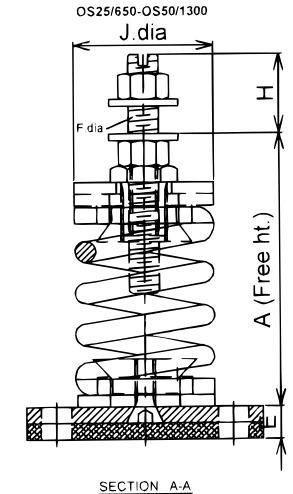
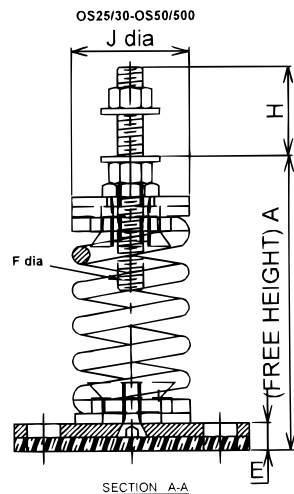
This above figures are theoretical values only based on the vertical natural frequency of the spring system assuming in infinitely stiff structural supports. The effects of high frequency spring coil resonances on low frequency performance are also ignored.

Compliance - Springs designed according to BS 1726 (Part 1) and recommendations made by SAE (US) and ASHRAE

- Due to policy of continual improvement, the specifications are subject to change without prior notice.
- Measurements are subject to 5% tolerance, Load and Deflection subject to 10% tolerance.
- To achieve good sound suppression do not over load fitting.

PART NO.	COLOUR CODE	RATED LOAD (KG)	DEFLECTION AT RATED	DIMENSIONS (mm)										
				A	B	C	D	E	F	G	H	J		
EFO25/30	Yellow	30	25											
EFO25/60	Green	60	25											
EFO25/100	Blue	100	25	115	85	70	110	10	M10	10	20	55		
EFO25/160	White	160	25											
EFO25/250	Red	250	25											
EFO25/200	Red	200	25											
EFO25/300	Purple	300	25											
EFO25/400	Grey	400	25											
EFO25/500	Orange	500	25	160	110	100	140	11	M16	12	27	75		
EFO25/600	Brown	600	25											
EFO25/700	Orange	700	25											
EFO25/800	Black	800	25											
EFO50/100	Yellow	100	50											
EFO50/200	Green	200	50											
EFO50/300	Blue	300	50	188	110	100	140	11	M16	12	27	75		
EFO50/400	White	400	50											
EFO50/500	Black	500	50											
EFO25/650	Yellow	650	26											
EFO25/850	Green	850	27	182	110	100	140	11	M16	12	27	75		
EFO25/1050	Blue	1050	26											
EFO25/1250	White	1250	26											
EFO25/1300	Red	1300	27											
EFO25/1600	Purple	1600	25	225	210	150	250	18	M24	16	51	75		
EFO25/2000	Grey	2000	26											
EFO25/2300	Brown	2300	29											
EFO50/510	Black/Purple	510	51											
EFO50/760	Black/Grey	760	51	240	210	150	250	18	M20	16	42	80		
EFO50/1000	Black/Orange	1000	50											
EFO50/1300	Black/Brown	1300	53											

Spring Stiffness is linear over its working range.



- Due to policy of continual improvement, the specifications are subject to change without prior notice.
- Measurements are subject to 5% tolerance, Load and Deflection subject to 10% tolerance.
- To achieve good sound suppression do not over load fitting.