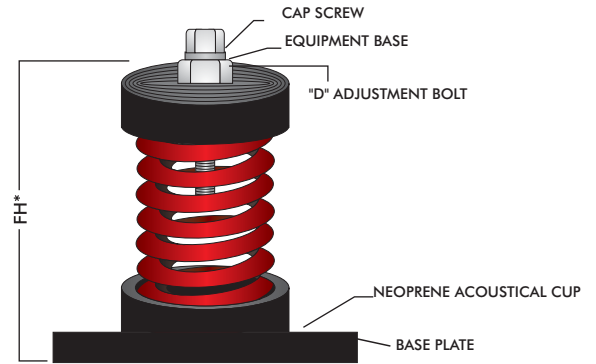
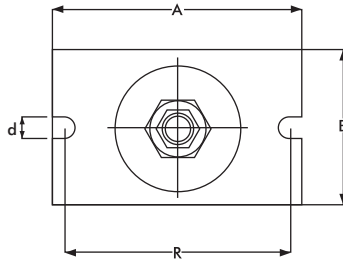


Applications

EFCUS Cup Spring isolators are recommended for use in isolating sources of noise and vibration located near critically quiet areas. They are highly effective for control of both high and low frequency vibration produced by reciprocating refrigeration compressors, pumps, packaged air-handling and air-conditioning equipments, centrifugal and axial fans, inertia bases, internal combustion engines. etc.



Features

- Laterally stable springs with neoprene top and base.
- Color-Coded springs according to load ratings.
- Non-skid bolt down base.
- Plated leveling / lock bolt.
- Isolates low frequency vibration.
- Springs are designed for 50% overload capacity

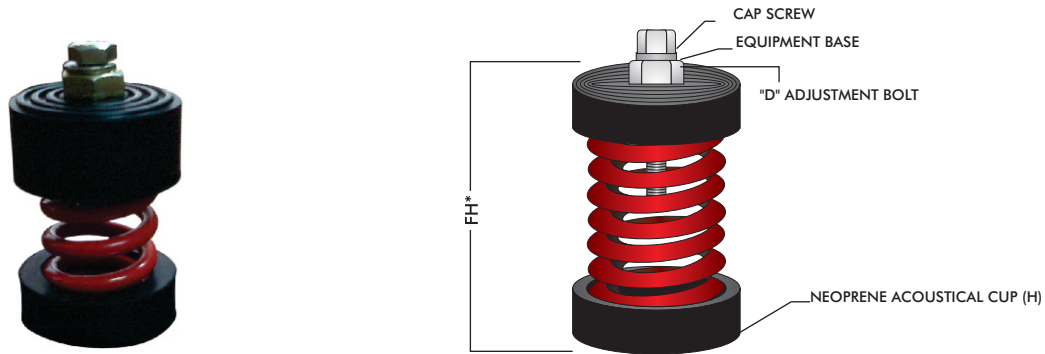
ISOLATOR MODEL	COLOR CODE	RATED LOAD (kg)	DEFLECTION (mm)	A (mm)	B (mm)	R (mm)	FH* (mm)	D	d
EFCUS 25-30	YELLOW	30	25	112	76	92	116	M-16	M-8
EFCUS 25-60	BLUE	60	25	112	76	92	116	M-16	M-8
EFCUS 25-100	GREEN	100	25	112	76	92	116	M-16	M-8
EFCUS 25-160	ORANGE	160	25	112	76	92	116	M-16	M-8
EFCUS 25-200	RED	200	25	112	76	92	116	M-16	M-8
EFCUS 25-250	PURPLE	250	25	112	76	92	116	M-16	M-8
EFCUS 25-300	GREY	300	25	140	100	115	150	M-18	M-12
EFCUS 25-400	ORANGE	400	25	140	100	115	150	M-18	M-12
EFCUS 25-500	BROWN	500	25	140	100	115	150	M-18	M-12
EFCUS 25-600	BLACK	600	25	140	100	115	150	M-18	M-12
EFCUS 25-800	RED	800	25	140	100	115	150	M-18	M-12
EFCUS 25-1050	WHITE	1050	25	140	100	115	150	M-18	M-12
EFCUS 25-1250	GREEN	1250	25	140	100	115	150	M-18	M-12

Compliance - Springs designed according to BS 1726 (Part 1) and recommendations made by SAE (US) and ASHRAE

- Due to policy of continual improvement, the specifications are subject to change without prior notice.
- Measurements are subject to 5% tolerance.
- To achieve good sound suppression do not over load fitting.

Applications

EFCUSA Cup Spring isolators are recommended for use in isolating sources of noise and vibration located near critically quiet areas. They are highly effective for control of both high and low frequency vibration produced by reciprocating refrigeration compressors, pumps, packaged air-handling and air-conditioning equipments, centrifugal and axial fans, inertia bases, internal combustion engines. etc.



Features

- Laterally stable springs with neoprene top and base.
- Color-Coded springs according to load ratings.
- Non-skid bolt down base.
- Plated leveling / lock bolt.
- Isolates low frequency vibration.
- Springs are designed for 50% overload capacity

ISOLATOR MODEL	COLOR CODE	RATED LOAD (kg)	DEFLECTION (mm)	FH* (mm)	D (mm)	H (mm)
EFCUSA 25-30	YELLOW	30	25	118	M16	68
EFCUSA 25-60	BLUE	60	25	118	M16	68
EFCUSA 25-100	GREEN	100	25	118	M16	68
EFCUSA 25-160	ORANGE	160	25	118	M16	68
EFCUSA 25-200	RED	200	25	118	M16	68
EFCUSA 25-250	PURPLE	250	25	118	M16	68
EFCUSA 25-300	GREY	300	25	142	M18	90
EFCUSA 25-400	ORANGE	400	25	142	M18	90
EFCUSA 25-500	BROWN	500	25	142	M18	90
EFCUSA 25-600	BLACK	600	25	142	M18	90
EFCUSA 25-800	RED	800	25	142	M18	90
EFCUSA 25-1050	WHITE	1050	25	142	M18	90
EFCUSA 25-1250	GREEN	1250	25	142	M18	90

Compliance - Springs designed according to BS 1726 (Part 1) and recommendations made by SAE (US) and ASHRAE

- Due to policy of continual improvement, the specifications are subject to change without prior notice.
- Measurements are subject to 5% tolerance.
- To achieve good sound suppression do not over load fitting.