

Application: Support designed to facilitate axial movement of mounted piping caused by thermal expansion / contraction or mechanical shifting. Usage of Roller Hangers is recommended for installations with long horizontal pipe involving changes in the temperature of the fluid medium or external environment. If pipe are gripped rigidly in such cases, forces arising from expansion / contraction can cause piping failure or structural damage.

Features

- Easyflex Rollers are made from solid steel shaft, for higher load bearing capacity and smoother operation than the hollow cast iron rollers supplied by others manufacturers.
- Supplied fully galvanized as standard.

Material

Roller, Roller Pin, Chair "Steel".

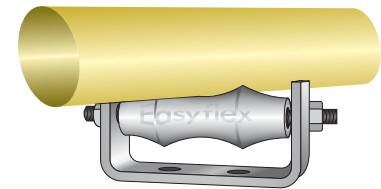
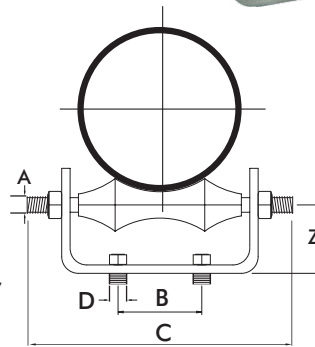
Finish

Electro galvanized post manufacture.

Other Options

- Epoxy Powder Coated finish (Suffix 'PC')
- Hot Dip Galvanized finish (Suffix 'HDG')
- Stainless Steel construction (Suffix 'SS')

**Compliance - US Standards MSS-SP58 (Type 44), MSS-SP69; BS 3974: Part 1 (1974)
EG to ASTM B633 SC3, BS1706 FE/ZN12**



Model No.	Size	Dimensions (mm)					Bracket Size	Z	Max. Recom. Load Kg
		A	B	C	D				
EFROC060	2"	12	35	110	12	6 x 32	40	350	
EFROC075	2 1/2"	12	35	110	12	6 x 32	40	350	
EFROC090	3"	12	50	145	12	6 x 32	45	350	
EFROC100	3 1/2"	12	50	145	12	6 x 32	45	500	
EFROC115	4"	12	50	180	16	8 x 40	50	500	
EFROC140	5"	12	75	215	16	8 x 40	55	500	
EFROC168	6"	19	80	250	16	10 x 50	60	500	
EFROC220	8"	22	85	285	19	10 x 50	75	1200	
EFROC273	10"	22	130	345	19	12 x 50	90	1200	
EFROC323	12"	25	140	395	19	12 x 50	105	1500	
EFROC355	14"	25	165	440	25	12 x 50	120	1500	
EFROC406	16"	32	210	480	25	12 x 75	140	3500	
EFROC457	18"	32	235	525	25	12 x 75	155	3500	
EFROC508	20"	50	260	555	25	12 x 75	165	3500	
EFROC610	24"	50	310	665	25	16 x 100	200	5500	

- Due to policy of continual improvement, the specifications are subject to change without prior notice.
- Measurements are subject to 5% tolerance.