

Application: Hanger designed to facilitate axial movement of suspended piping caused by thermal expansion / contraction or mechanical shifting. Usage of Roller Hangers is recommended for installations with long horizontal pipe involving changes in the temperature of the fluid medium or external environment. If pipe are gripped rigidly in such cases, forces arising from expansion / contraction can cause piping failure or structural damage.

Features

- Easyflex Rollers are made from solid steel shaft, for higher load bearing capacity and smoother operation than the hollow cast iron rollers supplied by others manufacturers.
- Yoke design permits vertical level adjustment of 30-75mm (based on hanger size) after pipe installation.
- Supplied fully galvanized as standard.

Material

Roller, Roller Pin, Frame "Steel".

Finish

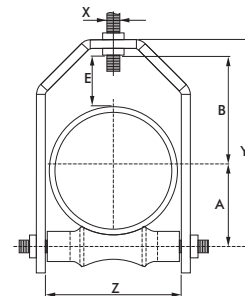
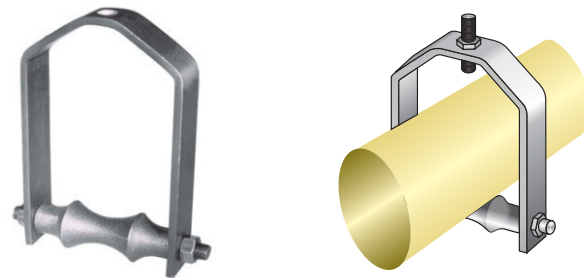
Electro galvanized post manufacture.

Other Options

Epoxy Powder Coated finish (Suffix 'PC')

Hot Dip Galvanised finish (Suffix 'HDG')

Stainless Steel construction (Suffix 'SS')



Compliance - US Standards MSS-SP58 (Type 43), MSS-SP69; EG to ASTM B633 SC3, BS1706 FE/ZN12

| Model No. | Size | Dimensions (mm) | | | | | | | Max. Recom. Load Kg |
|-----------|--------|-----------------|-----|--------------|----|----|-----|-----|---------------------|
| | | A | B | Bracket Size | E | X | Y | Z | |
| EFRLH035 | 1" | 28 | 43 | 3x25 | 32 | 10 | 90 | 46 | 100 |
| EFRLH042 | 1 1/4" | 33 | 46 | 3x25 | 32 | 10 | 96 | 47 | 100 |
| EFRLH048 | 1 1/2" | 38 | 50 | 3x25 | 32 | 10 | 107 | 62 | 100 |
| EFRLH060 | 2" | 41 | 57 | 3x25 | 32 | 10 | 122 | 64 | 125 |
| EFRLH075 | 2 1/2" | 50 | 74 | 3x25 | 44 | 12 | 148 | 92 | 150 |
| EFRLH090 | 3" | 56 | 81 | 6x32 | 44 | 12 | 161 | 94 | 150 |
| EFRLH100 | 3 1/2" | 65 | 88 | 6x32 | 45 | 12 | 180 | 110 | 190 |
| EFRLH115 | 4" | 69 | 93 | 6x40 | 46 | 12 | 192 | 122 | 250 |
| EFRLH140 | 5" | 88 | 114 | 6x50 | 50 | 12 | 233 | 152 | 300 |
| EFRLH168 | 6" | 102 | 125 | 6x50 | 50 | 19 | 260 | 180 | 300 |
| EFRLH220 | 8" | 131 | 152 | 10x65 | 50 | 22 | 326 | 230 | 475 |
| EFRLH273 | 10" | 161 | 178 | 10x65 | 50 | 22 | 381 | 285 | 475 |
| EFRLH323 | 12" | 192 | 208 | 12x65 | 55 | 22 | 440 | 335 | 550 |
| EFRLH355 | 14" | 212 | 221 | 12x65 | 55 | 25 | 478 | 372 | 550 |
| EFRLH406 | 16" | 233 | 247 | 12x65 | 55 | 25 | 524 | 421 | 585 |
| EFRLH457 | 18" | 267 | 283 | 12x65 | 65 | 25 | 590 | 474 | 675 |
| EFRLH508 | 20" | 300 | 305 | 16x75 | 65 | 32 | 664 | 522 | 725 |
| EFRLH610 | 24" | 351 | 367 | 16x100 | 75 | 32 | 788 | 630 | 975 |

▪ Due to policy of continuous improvement, the specifications are subject to change without prior notice.
 ▪ Measurements are subject to 5% tolerance.