

Type AMD

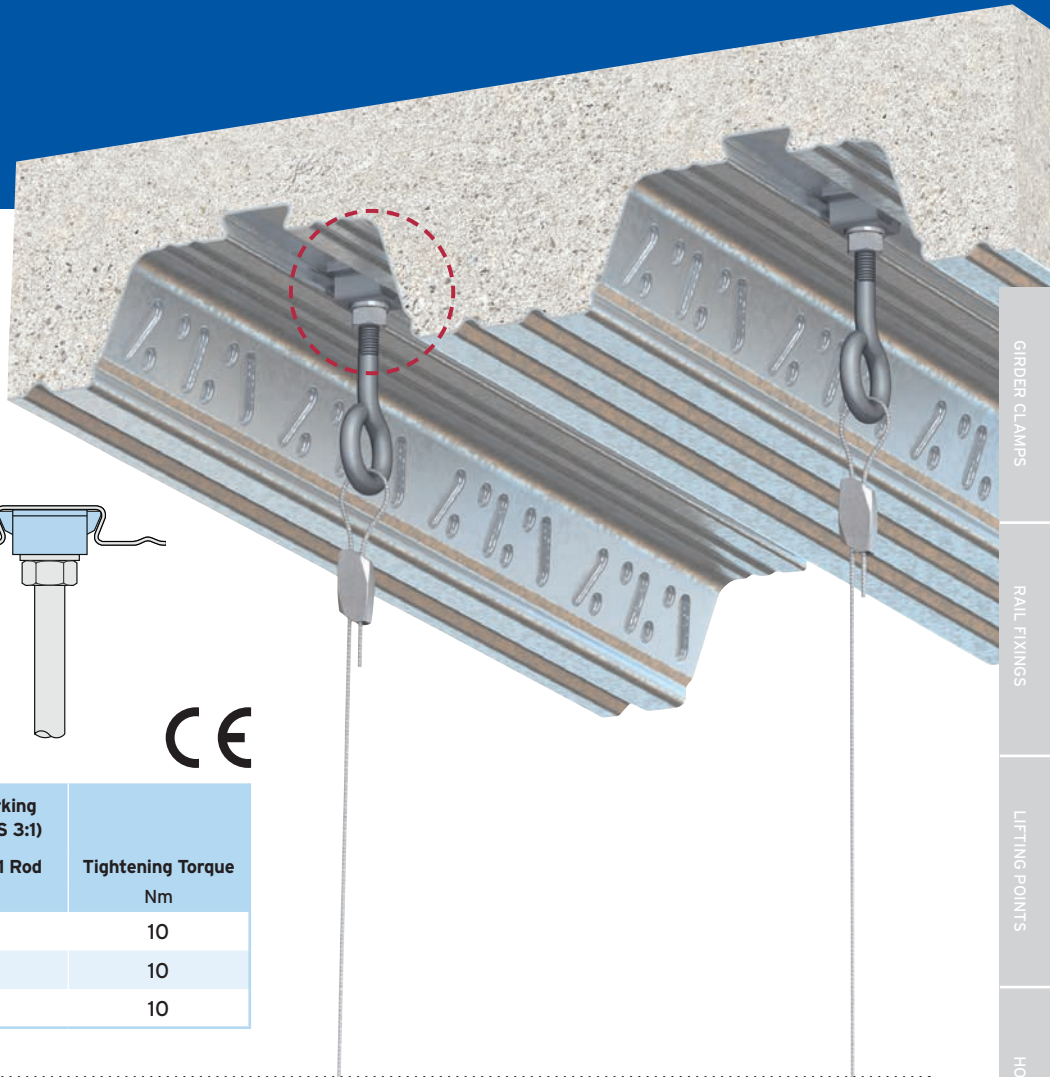
Suitable for AMDECK® 60 and AMDECK® 80 decking profiles manufactured by AMDECK®.



Locking Plate: Pre-galvanised strip.
Wedge: Malleable iron, bright zinc plated.

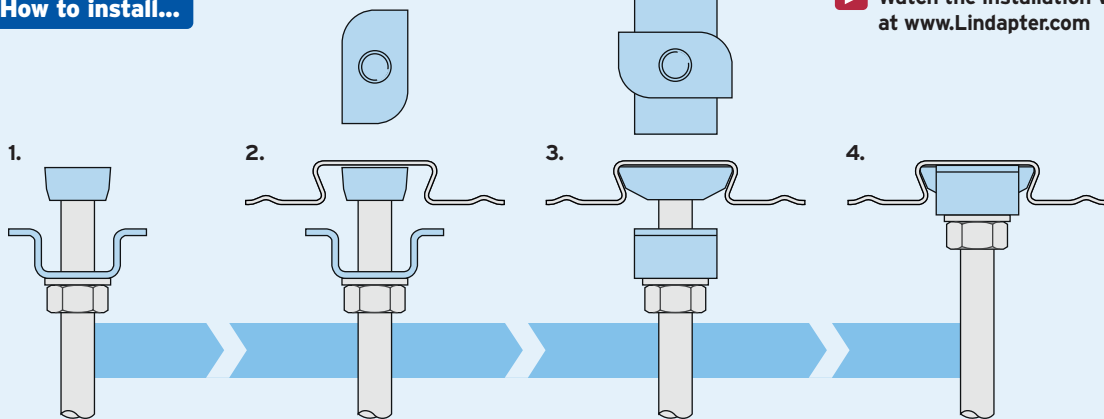


Product Code	Rod min 4.6	Safe Working Load (FOS 3:1)	
		Tensile / 1 Rod kN	Tightening Torque Nm
AMD06	M6	1.0	10
AMD08	M8	1.0	10
AMD10	M10	1.0	10



How to install...

▶ Watch the installation video at www.Lindapter.com



- 1) Pre-assemble the Locking Plate and wedge (flat surface facing up) onto the threaded rod.
- 2) Insert wedge into the re-entrant channel of the decking, rotate 90°.
- 3) Slide plate up the threaded rod, over the wedge, to lock it in position into the channel.
- 4) Tighten a nut beneath the plate and washer to hold the assembly in position.

- ▶ Install the decking fixings after the concrete has been poured and has reached full strength.
- ▶ If the decking profile is deformed or distorted, do not install the fixing. If in doubt, contact the Technical Support team for advice.
- ▶ Although the Type AMD is similar in appearance to the Type AW (page 68), it should NOT be used in profiles manufactured by Richard Lees Decking.

For Characteristic Resistances when designing a connection to Eurocode 3, refer to DoP No.018 on Lindapter's website or request the DoP Brochure >>

